

Spotted Lanternfly



Spotted Lanternfly Reported Distribution
Updated September 22, 2021

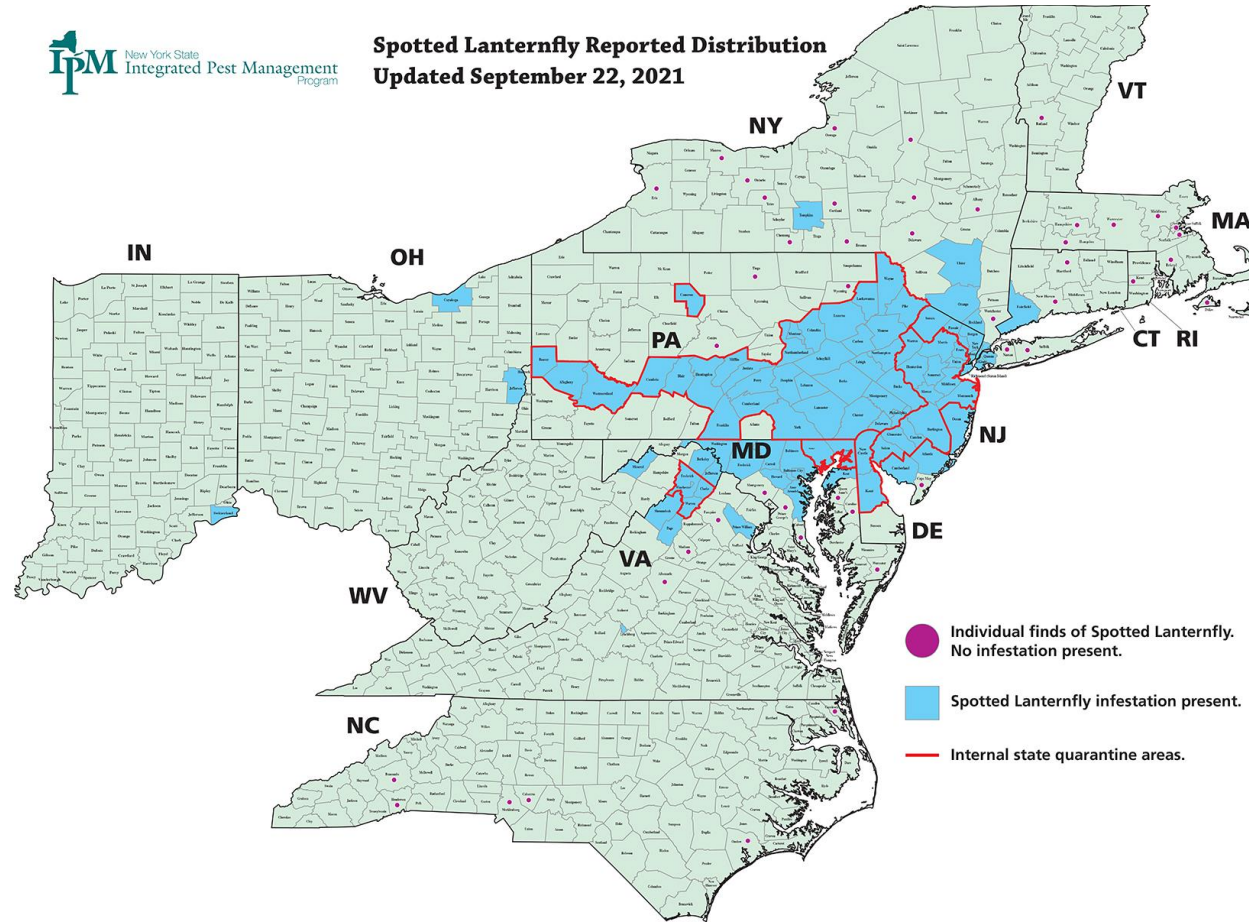


Photo: Emelie Swackhamer Penn State University

Where To Report Spotted Lanternfly

- spottedlanternfly@agriculture.ny.gov
- [NY's invasive species database and mapping system | NY iMapInvasives](#)



Photo: Marc McAndrews

Beech Leaf Disease – Maria MoskaLee



Department of
Environmental
Conservation

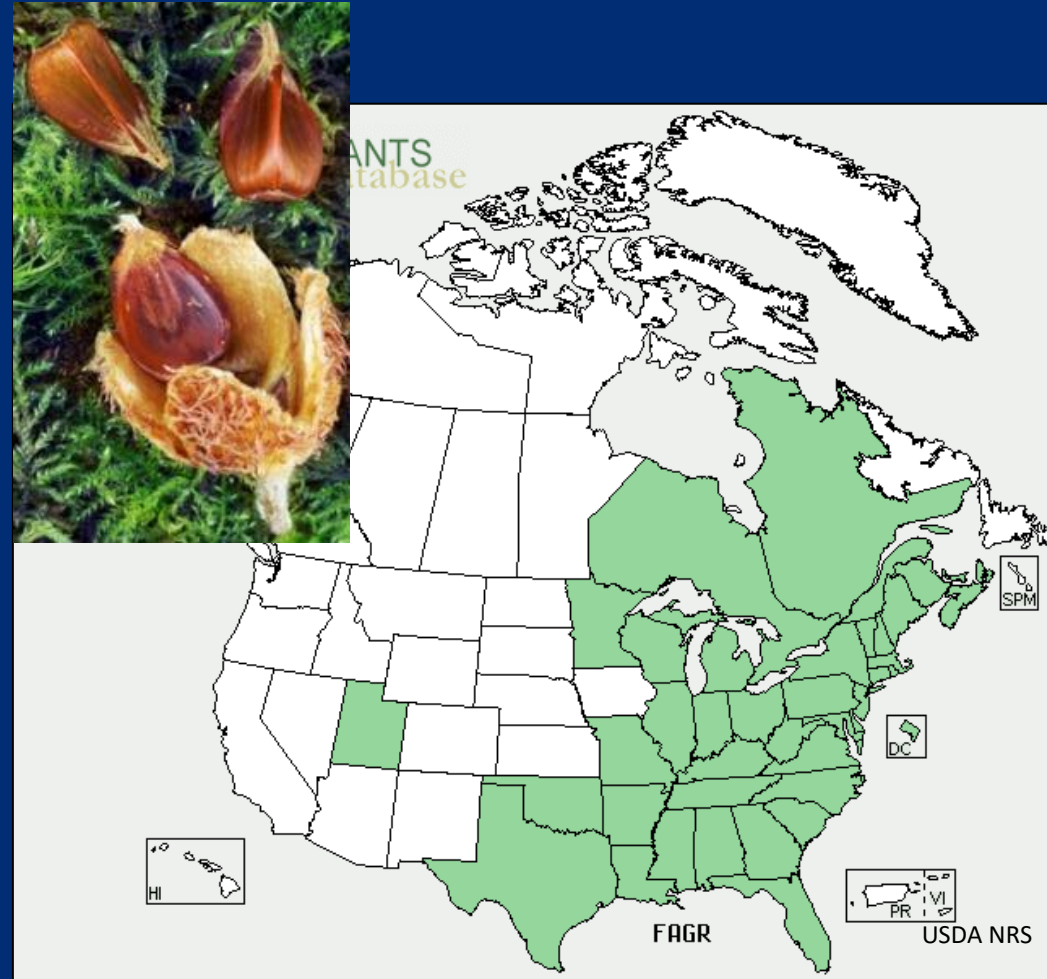
Beech Leaf Disease in New York



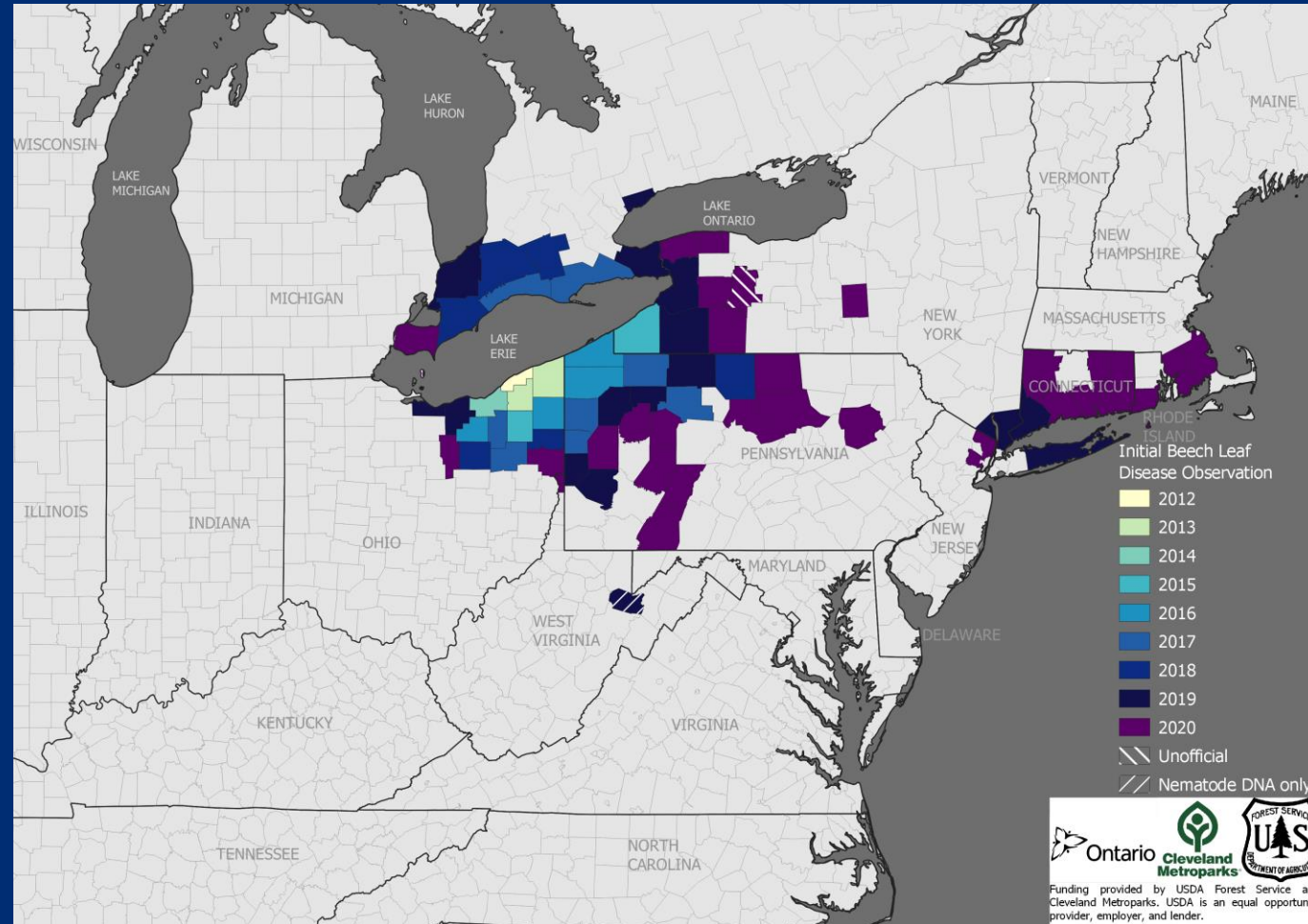
Maria MoskaLee
NYS DEC Forest Health



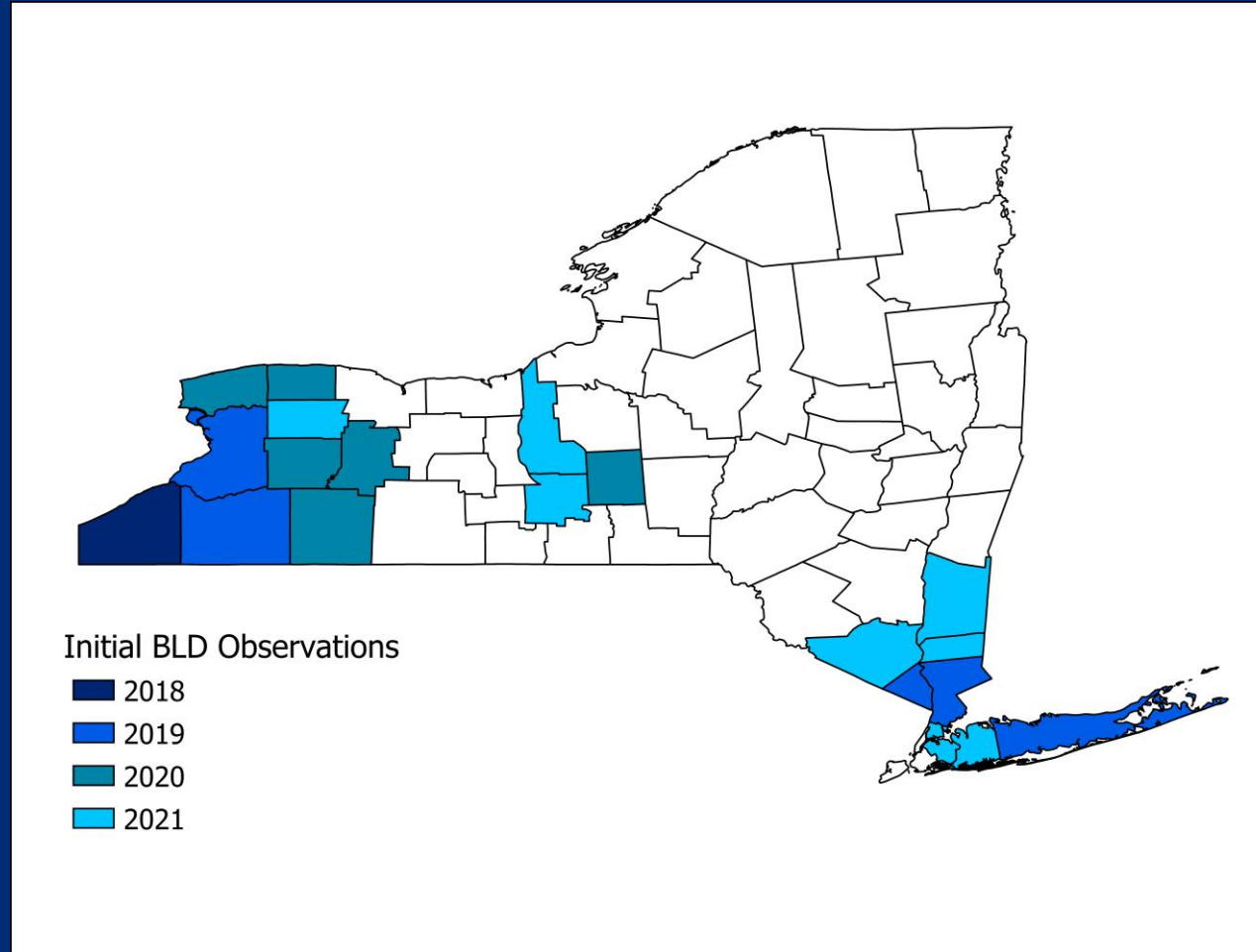
Importance of American beech



BLD in North America, 2020 map



BLD Positive Counties in New York



Litylenchus crenatae mccannii

Carta, 2020

Beech leaf disease symptoms caused by newly recognized nematode subspecies *Litylenchus crenatae mccannii* (Anguinata) described from *Fagus grandifolia* in North America

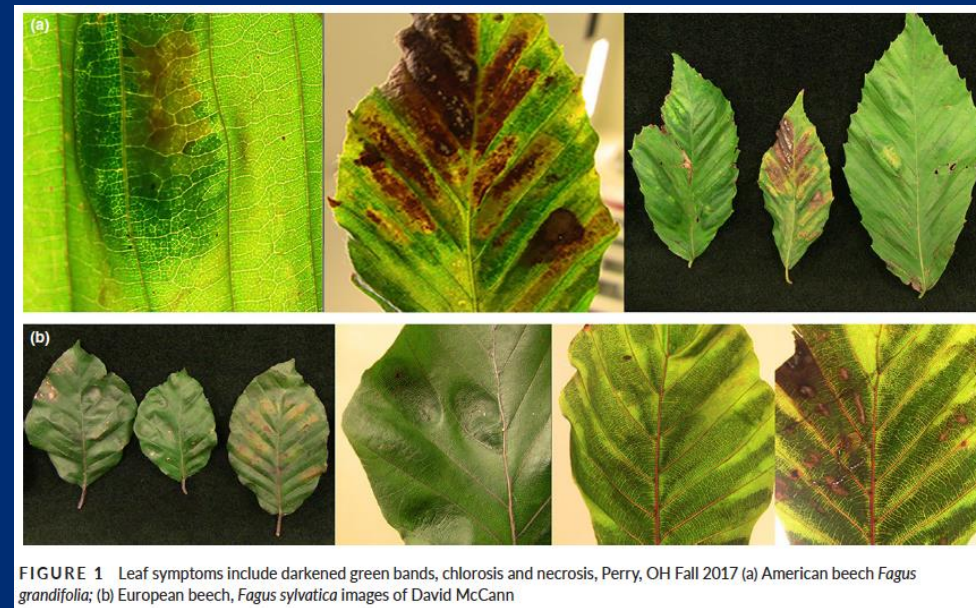
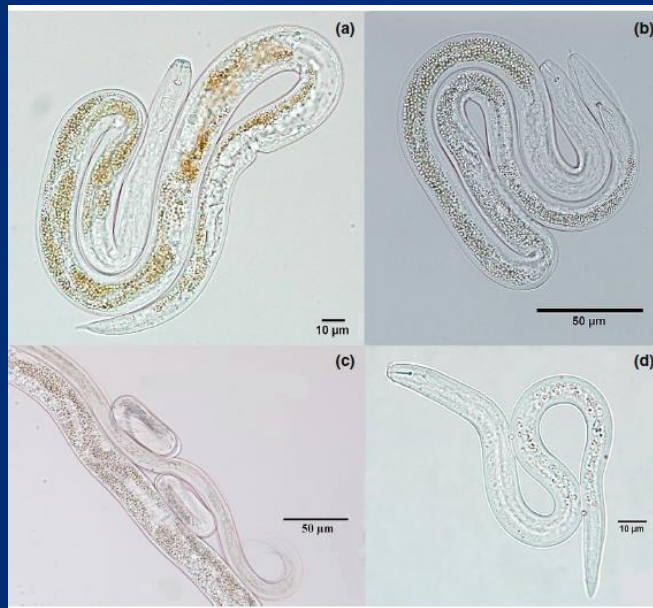


FIGURE 1 Leaf symptoms include darkened green bands, chlorosis and necrosis, Perry, OH Fall 2017 (a) American beech *Fagus grandifolia*; (b) European beech, *Fagus sylvatica* images of David McCann

Polarized light microscopy of live *Litylenchus crenatae mccannii*
 (a) female (b) male (c) eggs (d) juvenile

BLD Symptoms



Light Banding



Heavy Banding



Chlorosis

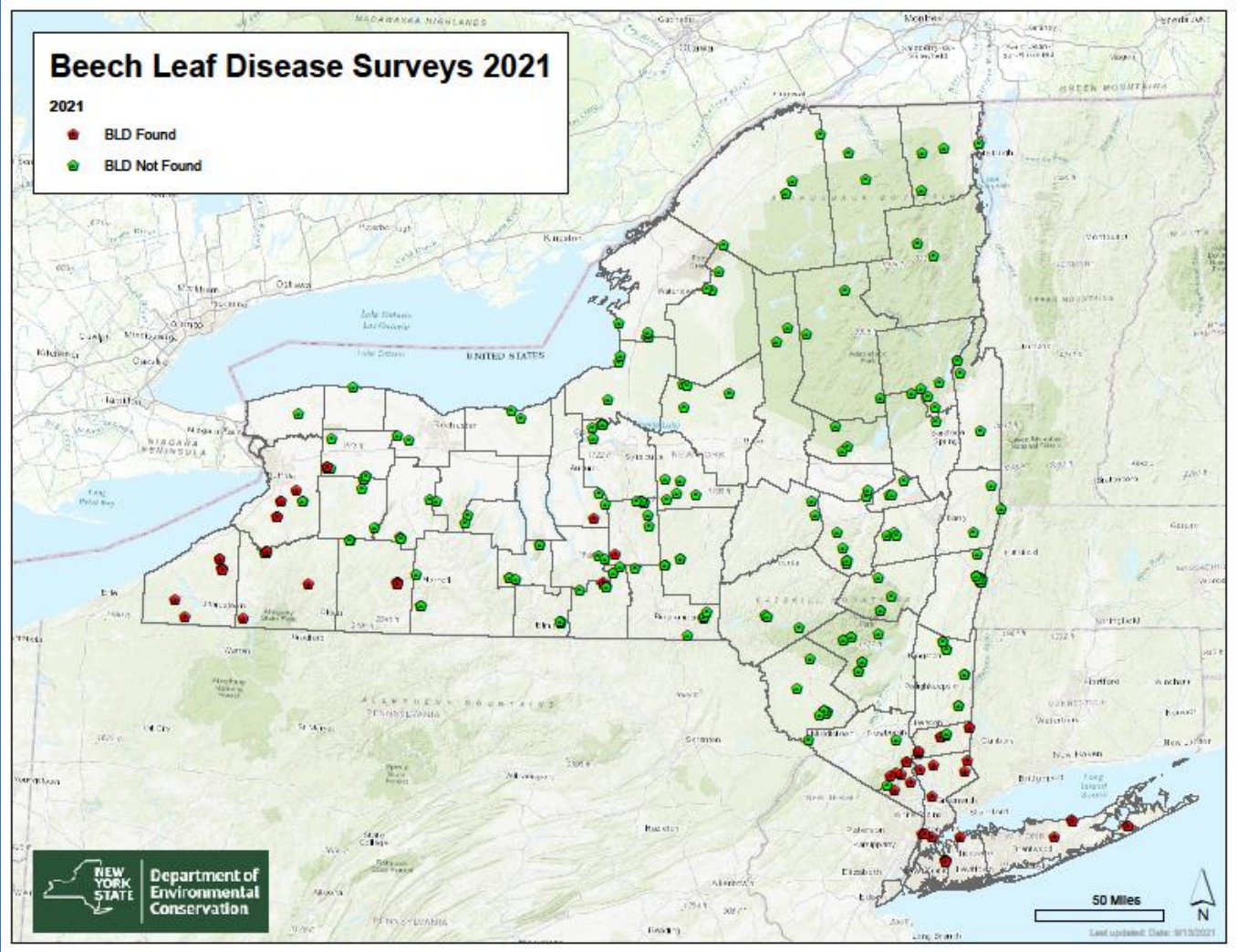
Necrosis

Puckering

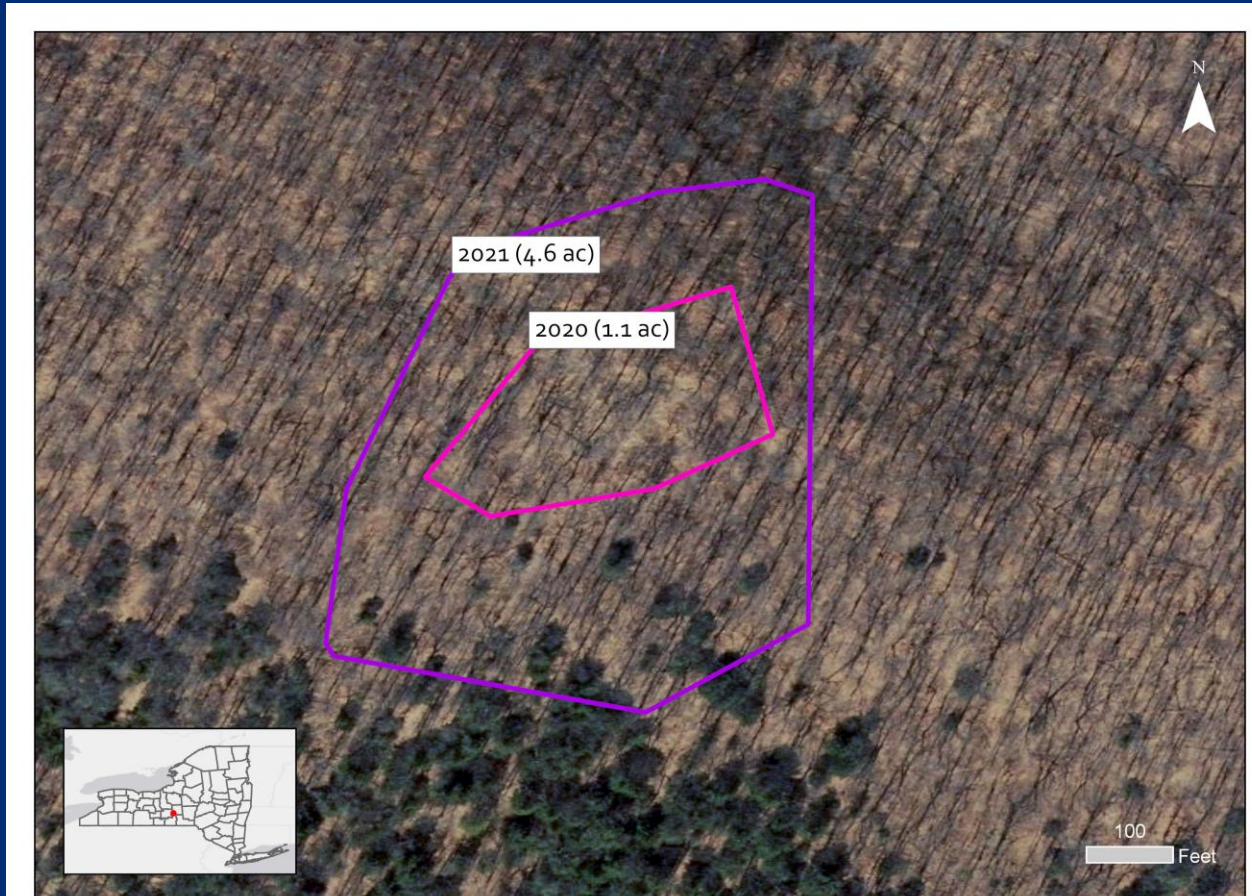
Curling

Report sightings to
foresthealth@dec.ny.gov
or submit through **imap**

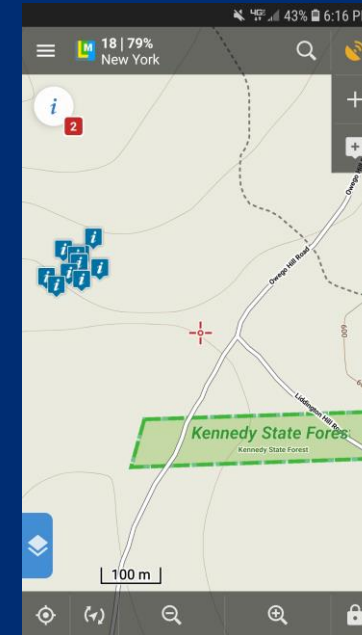
2021 BLD Survey Results



Spot Expansion – Tracking Local Spread



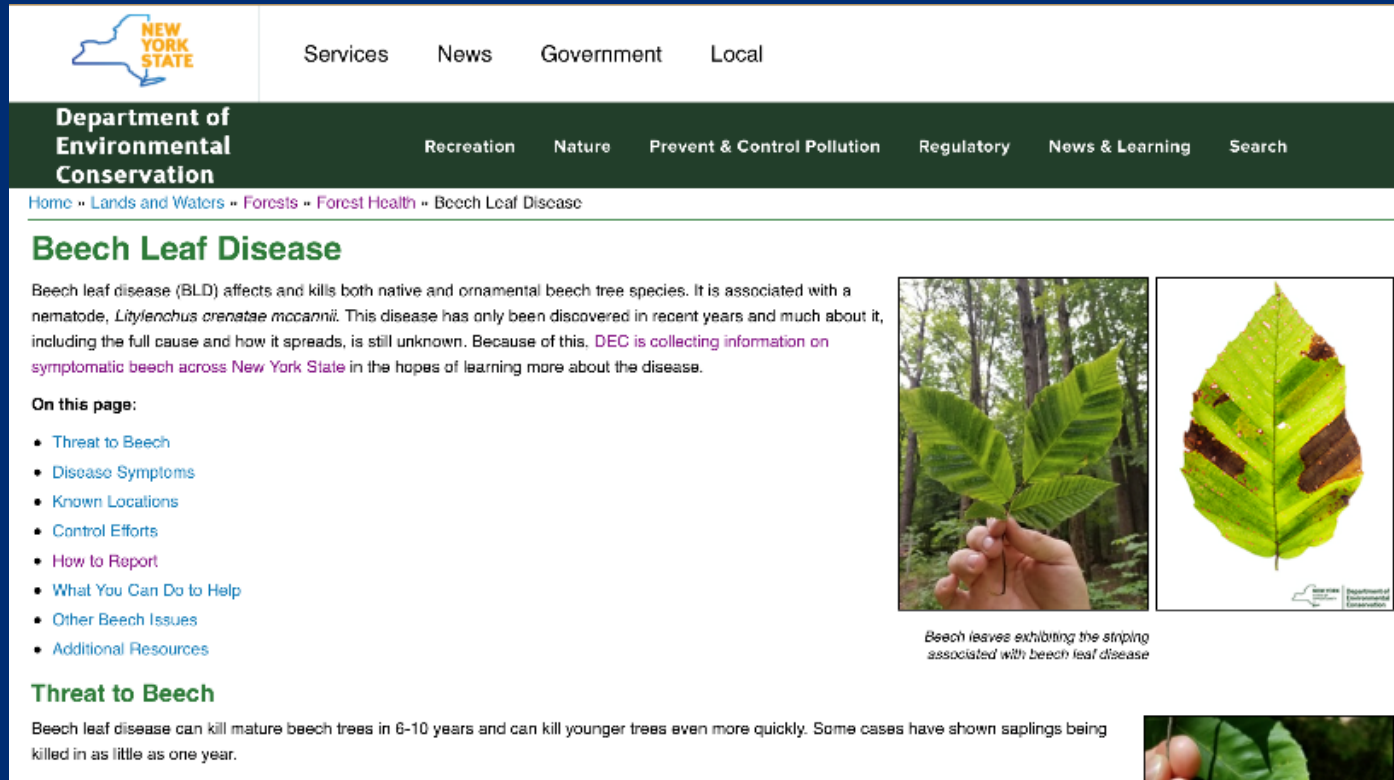
Beech Leaf Disease Expansion 2020 to 2021 - Kennedy State Forest



Mitigation



NYS DEC BLD Webpage



The screenshot shows the NYS DEC BLD Webpage. At the top left is the New York State logo. Navigation links include Services, News, Government, and Local. Below this is the Department of Environmental Conservation logo and a secondary navigation bar with links for Recreation, Nature, Prevent & Control Pollution, Regulatory, News & Learning, and Search. The breadcrumb trail reads: Home » Lands and Waters » Forests » Forest Health » Beech Leaf Disease. The main heading is "Beech Leaf Disease". The text explains that BLD affects and kills both native and ornamental beech tree species, associated with a nematode, *Litylenchus crenatae maccanil*. It notes that the full cause and how it spreads is still unknown, and that DEC is collecting information on symptomatic beech across New York State. A list of links under "On this page:" includes Threat to Beech, Disease Symptoms, Known Locations, Control Efforts, How to Report, What You Can Do to Help, Other Beech Issues, and Additional Resources. A section titled "Threat to Beech" states that BLD can kill mature beech trees in 6-10 years and younger trees even more quickly. Two images are shown: one of a hand holding a beech leaf with characteristic striping, and another of a beech leaf with large brown necrotic patches. A small DEC logo is visible in the bottom right corner of the image area.

NEW YORK STATE

Services News Government Local

Department of Environmental Conservation

Recreation Nature Prevent & Control Pollution Regulatory News & Learning Search

Home » Lands and Waters » Forests » Forest Health » Beech Leaf Disease

Beech Leaf Disease

Beech leaf disease (BLD) affects and kills both native and ornamental beech tree species. It is associated with a nematode, *Litylenchus crenatae maccanil*. This disease has only been discovered in recent years and much about it, including the full cause and how it spreads, is still unknown. Because of this, DEC is collecting information on symptomatic beech across New York State in the hopes of learning more about the disease.

On this page:

- [Threat to Beech](#)
- [Disease Symptoms](#)
- [Known Locations](#)
- [Control Efforts](#)
- [How to Report](#)
- [What You Can Do to Help](#)
- [Other Beech Issues](#)
- [Additional Resources](#)

Threat to Beech

Beech leaf disease can kill mature beech trees in 6-10 years and can kill younger trees even more quickly. Some cases have shown saplings being killed in as little as one year.

Beech leaves exhibiting the striping associated with beech leaf disease

<https://www.dec.ny.gov/lands/120589.html>

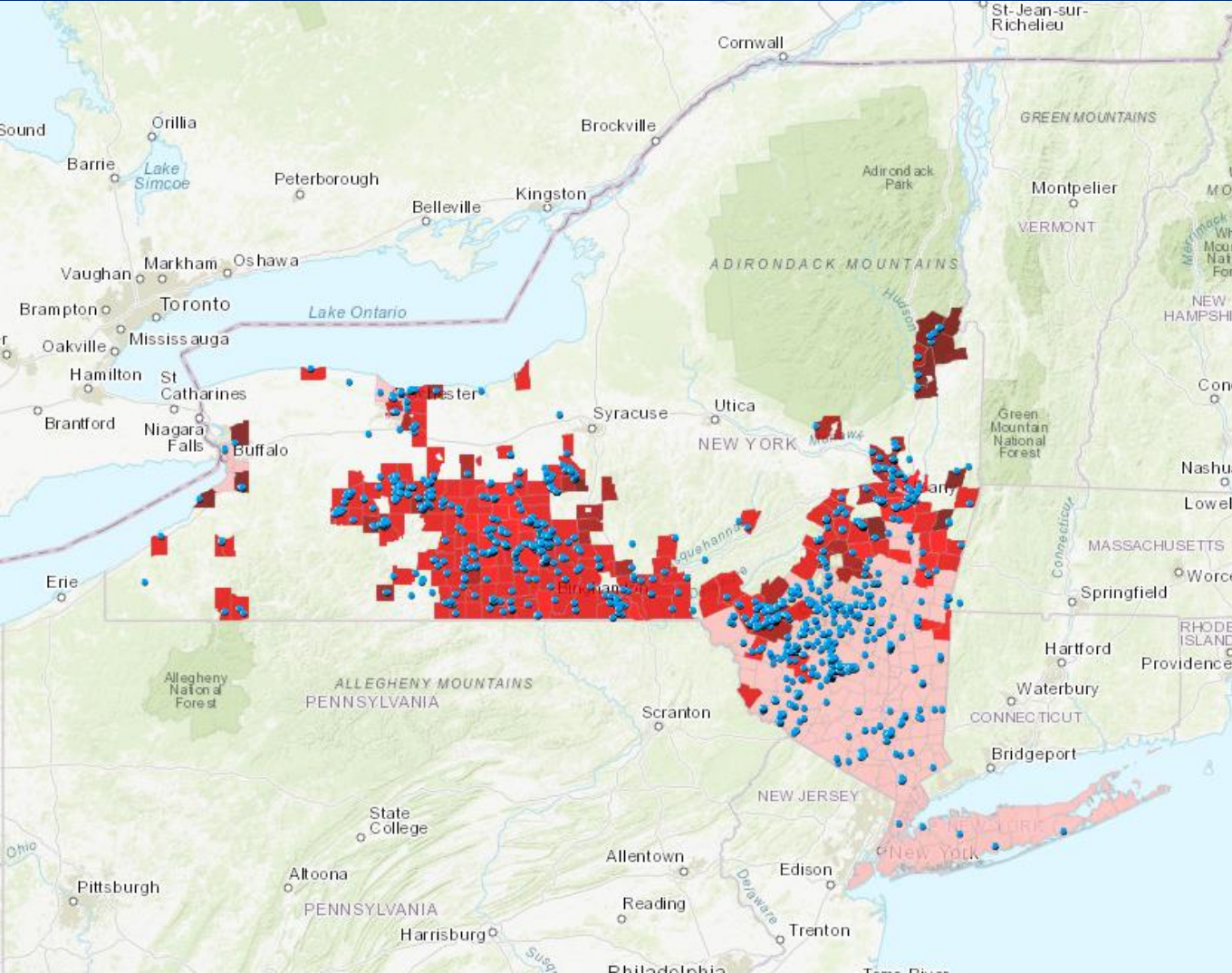
Or Google 'NYS DEC BLD'

Plot Monitoring



Hemlock Woolly Adelgid – Jason Denham

Hemlock Woolly Adelgid





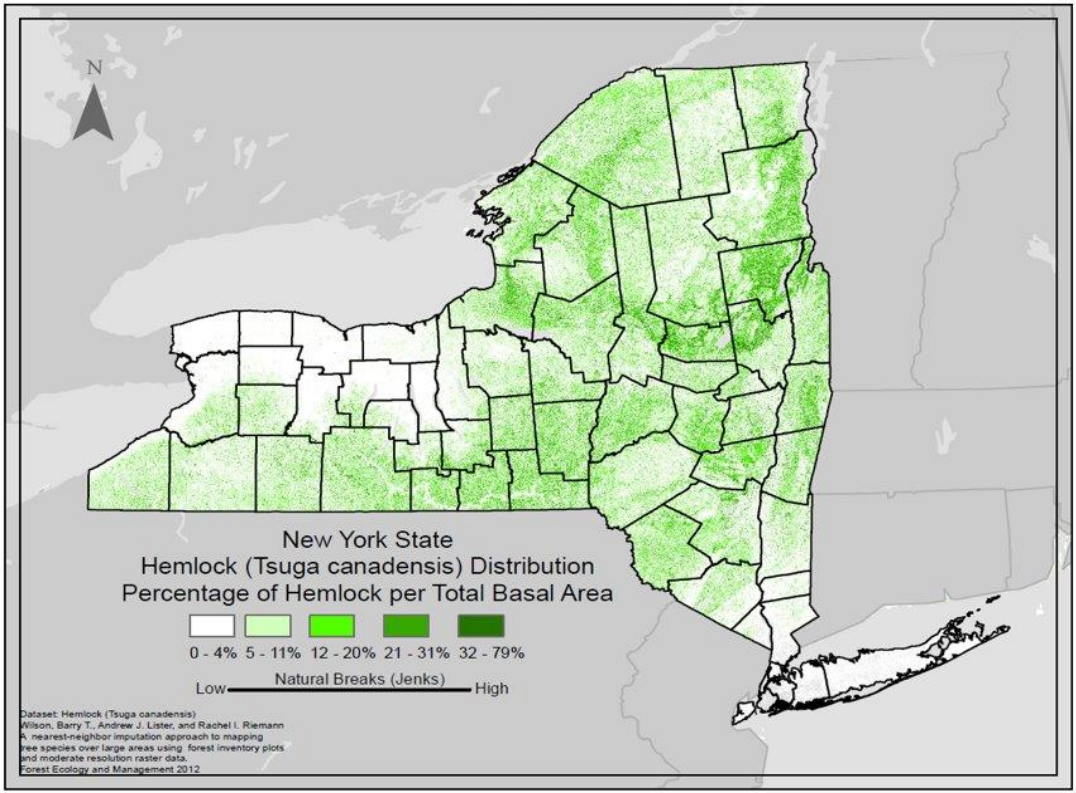
Reporting and Information

Foresthealth@dec.ny.gov

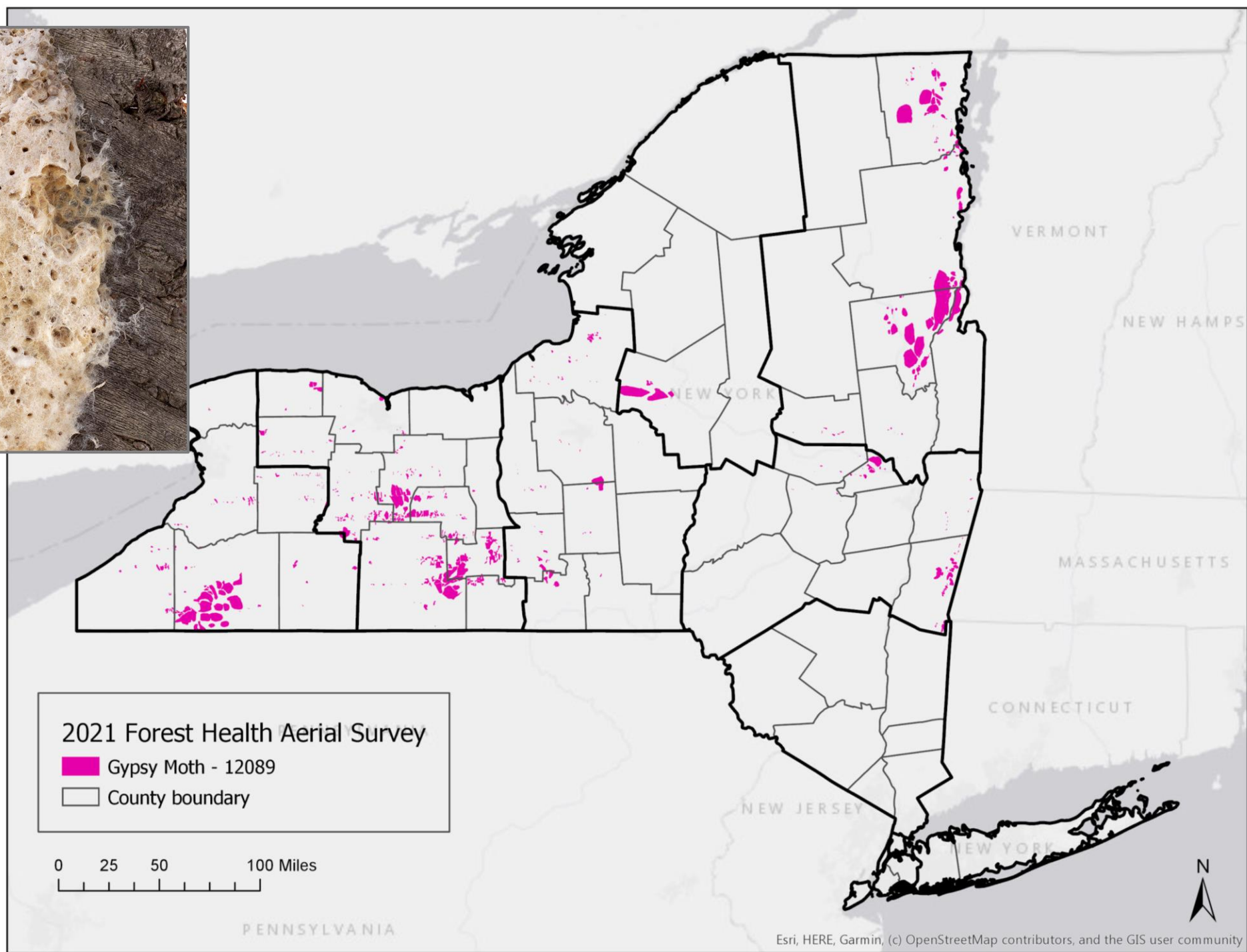
<https://www.dec.ny.gov/animals/7250.html>

<https://www.nyimainvasives.org/>

<https://blogs.cornell.edu/nyshemlockinitiative/hemlock-woolly-adelgid/>



Oak Wilt / Gypsy Moth – Rob Cole



- Oak
- Maple
- Apple
- Hickory
- Birch
- Willow
- Basswood
- Beech
- Aspen
- White pine
- Spruce
- Hemlock
- Various landscaping shrubs and plants



22
Virus

nucleopolyhedrosis virus (NPV)

Fungus

Entomophaga maimaiga

Egg Parasitoid

Ooencyrtus kuvana



Photo by Steven Katovich



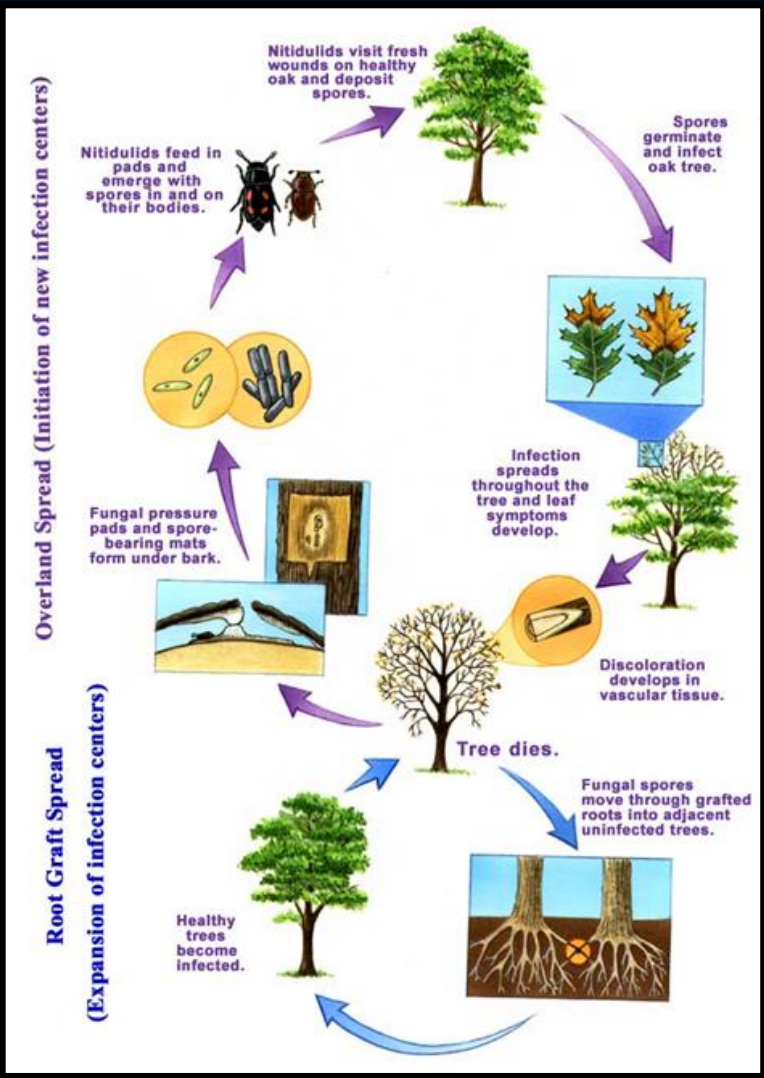
Photo by Steven Katovich



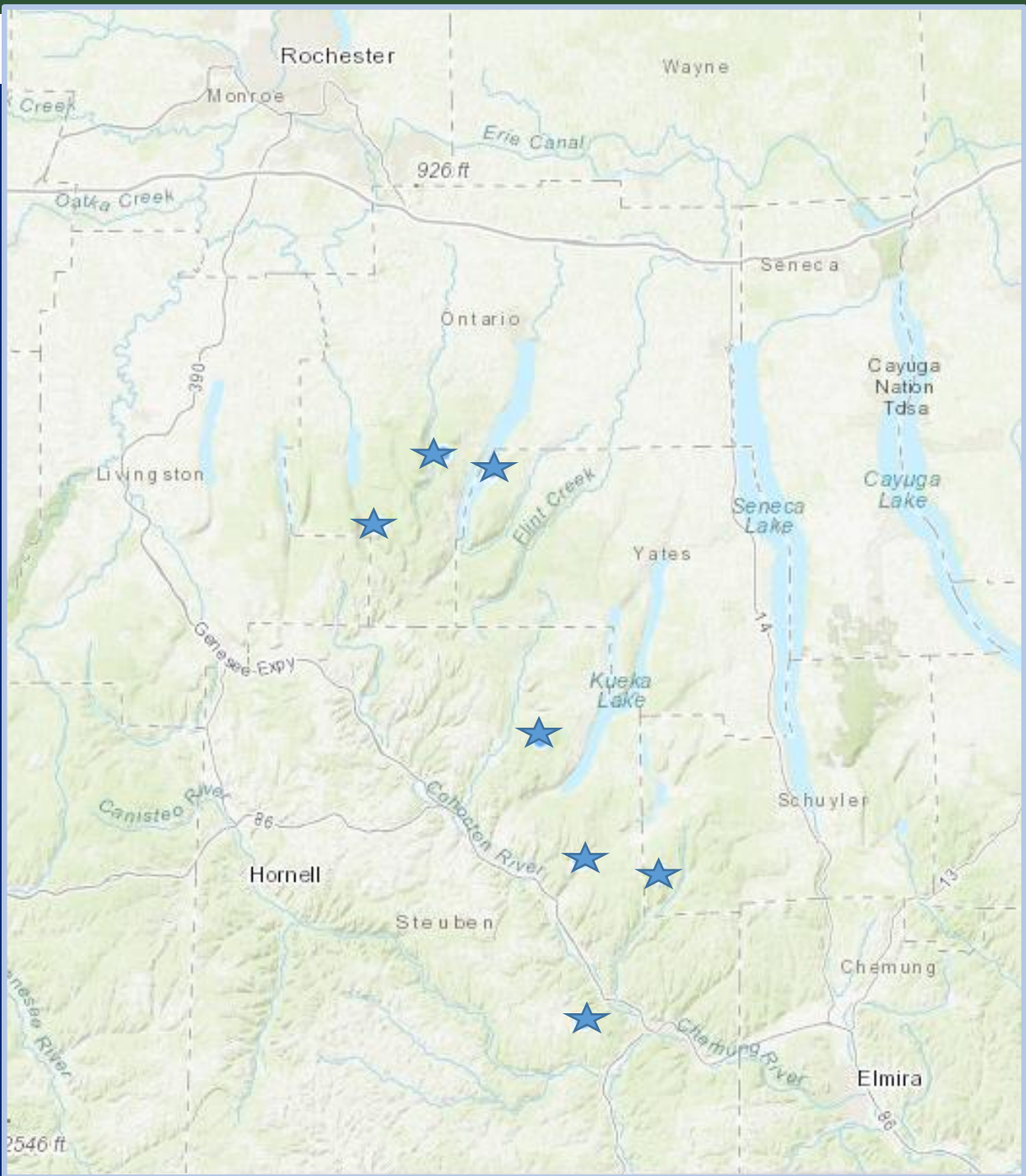
Bacillus thuringiensis (Bt)

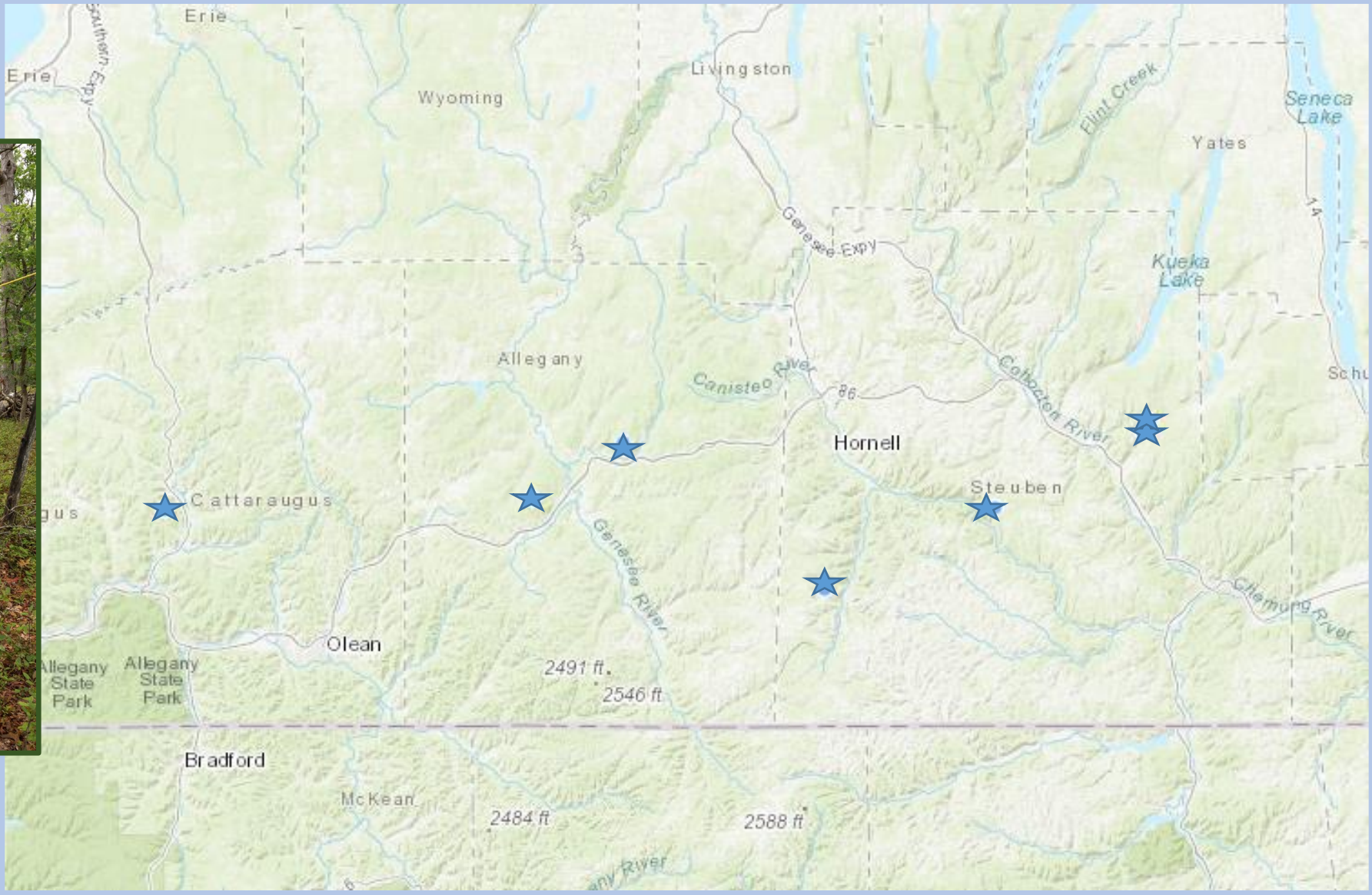


Oak Wilt









New York State Oak Wilt Detections and Quarantine Districts

